



new 2017

Fx450



REMA[®]
WOODWORKING MACHINES



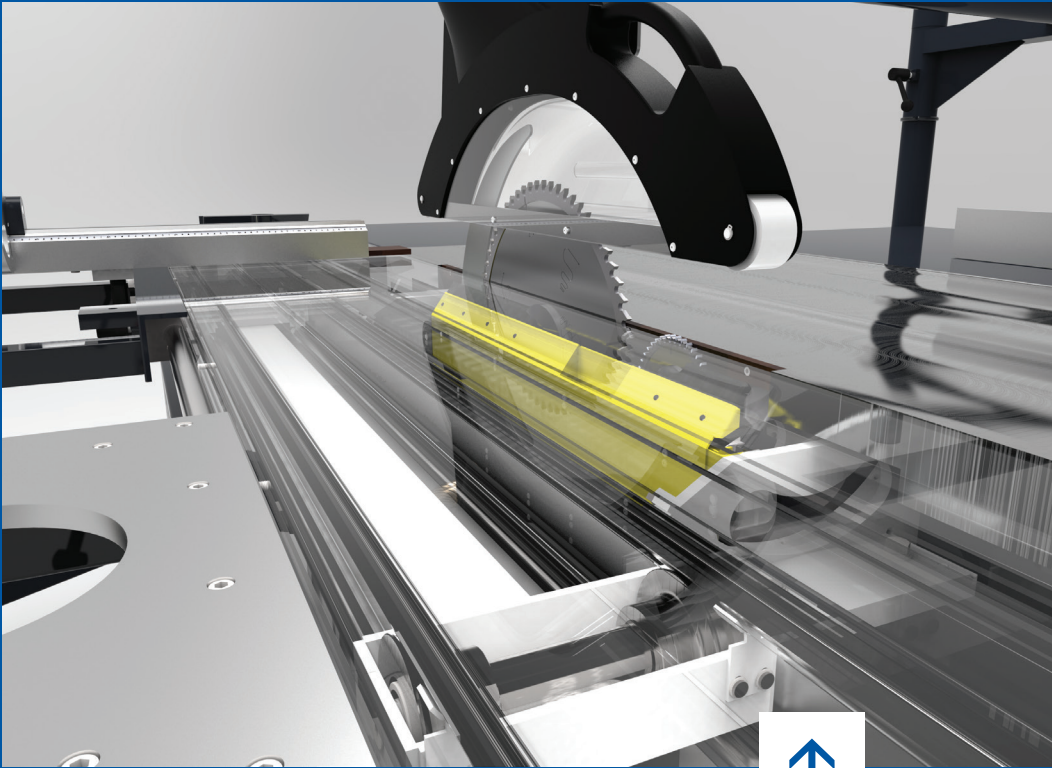


Fx450

Fx450 is a new sliding table panel saw made by REMA S.A. It sets the highest standards for sliding table panel saw. Fx450 is distinguished by strong structure and comprehensive cutting parameters.

The saw is equipped with a main cutting unit for circular saw blades with diameters from Ø 300 to Ø 450 mm, providing a maximum sawing height of 150 mm along with a scoring saw. The standard cutting width with the rip fence is 1400 mm.

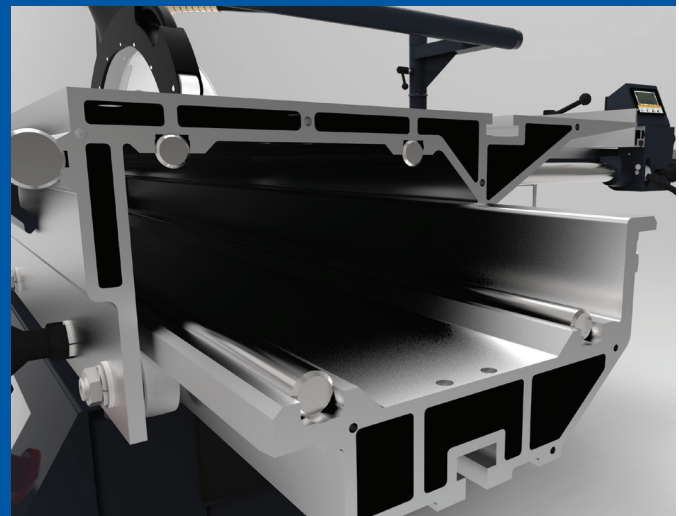
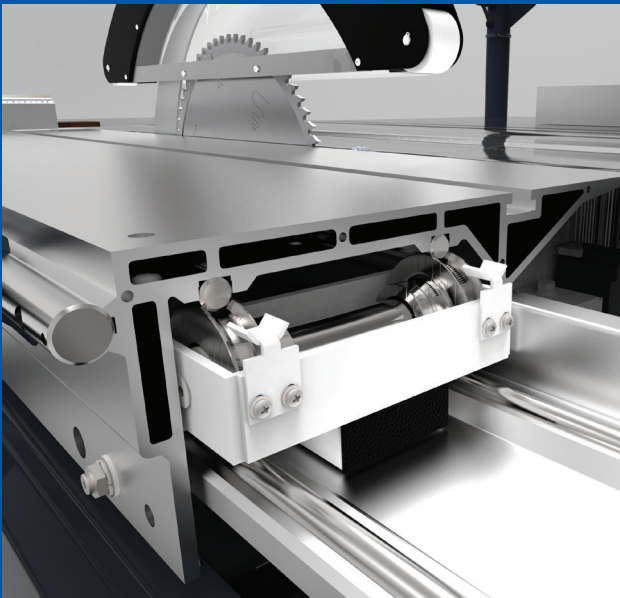




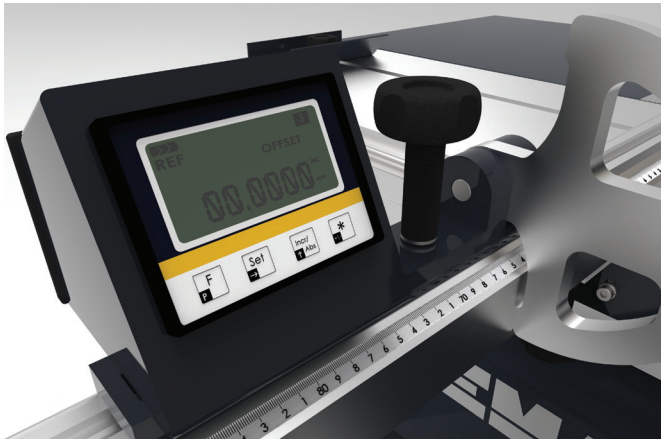
Sturdy guide of the sliding table on the 4 steel rods with a hardness of 60 HRC. Due to the increased diameter of the steel rollers, the sliding table runs smoothly.



Trolley of the anodize aluminum sliding table with automatic clearance compensation.



Fx450 Technical Solutions ↓



Electronic reader of the crosscut fence stopper with absolute memory function and 0.1 mm accuracy (optional).



Continuous electronic readout of the saw angle – standard for the version with geared motors. Electronic readout of the saw height – option for the geared motors version.

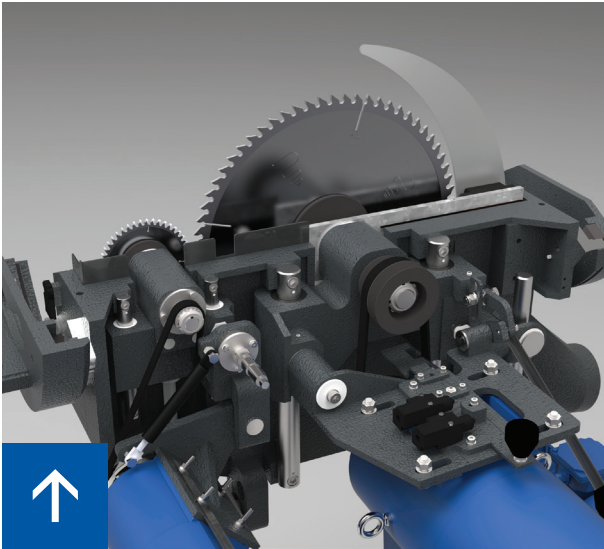


416 mm wide multi-chamber aluminium profile with 4 steel rollers and 12 eccentric rollers.

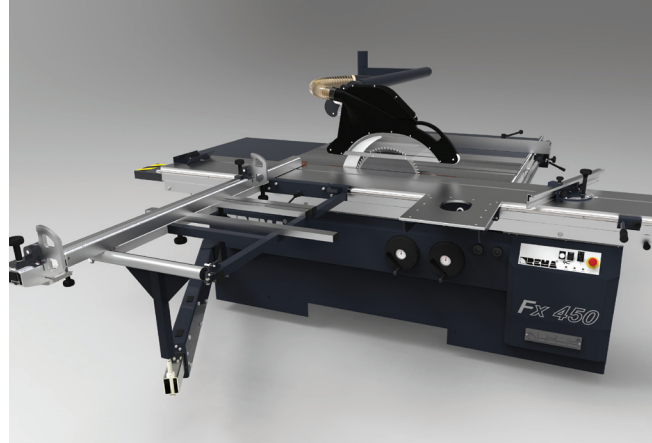


Thanks to the used mechanisms, the top guard adapts to the height of the workpiece to ensure safe operation. The guard is attached to a pipe, which has also a sawdust discharge function.



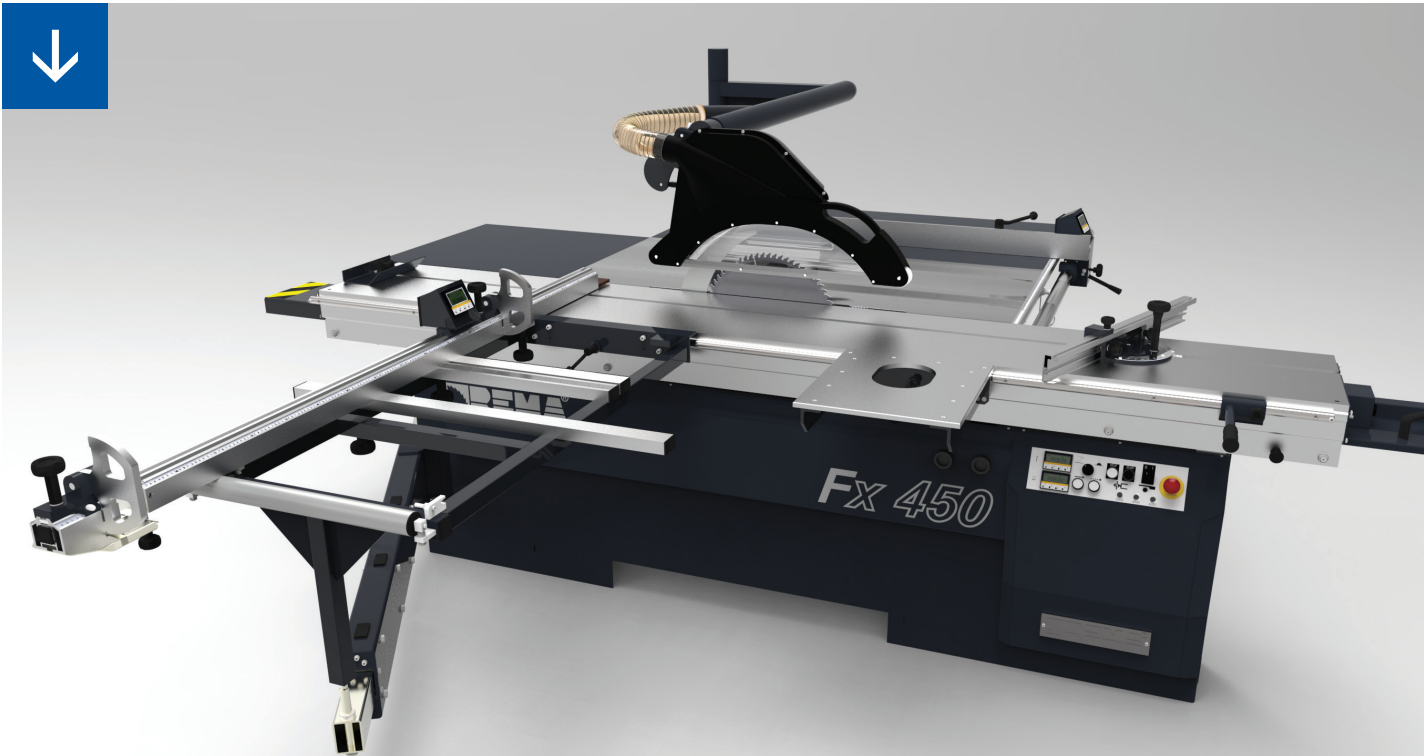


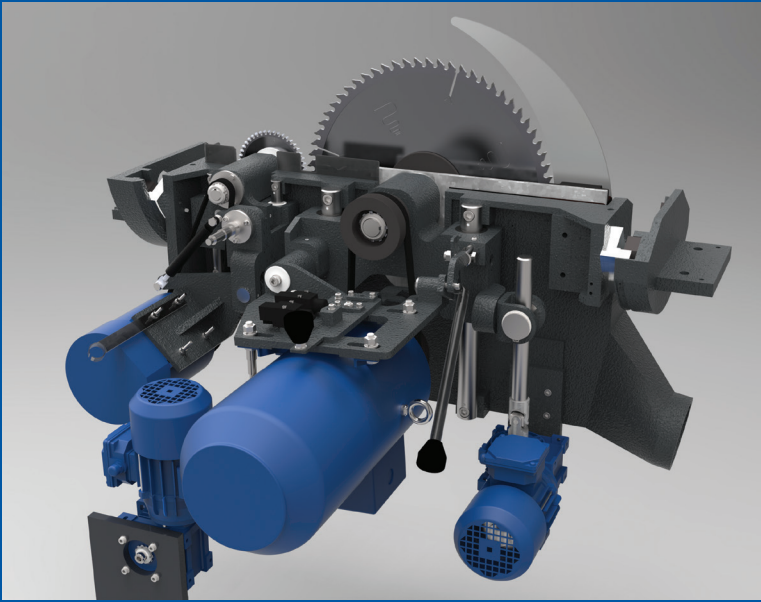
↑
Cutting unit set on cast iron arches. A durable and functional solution with a 15 year warranty.



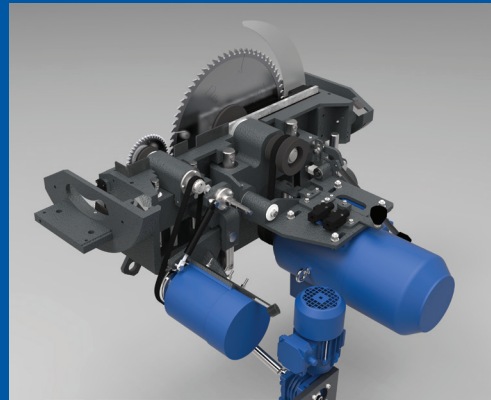
↑
The Fx450 is also available in manual version.

Additional support table to increase the surface of the workpiece support (optional).





Cast iron cradle with motorised adjustment of height and angle of saw.



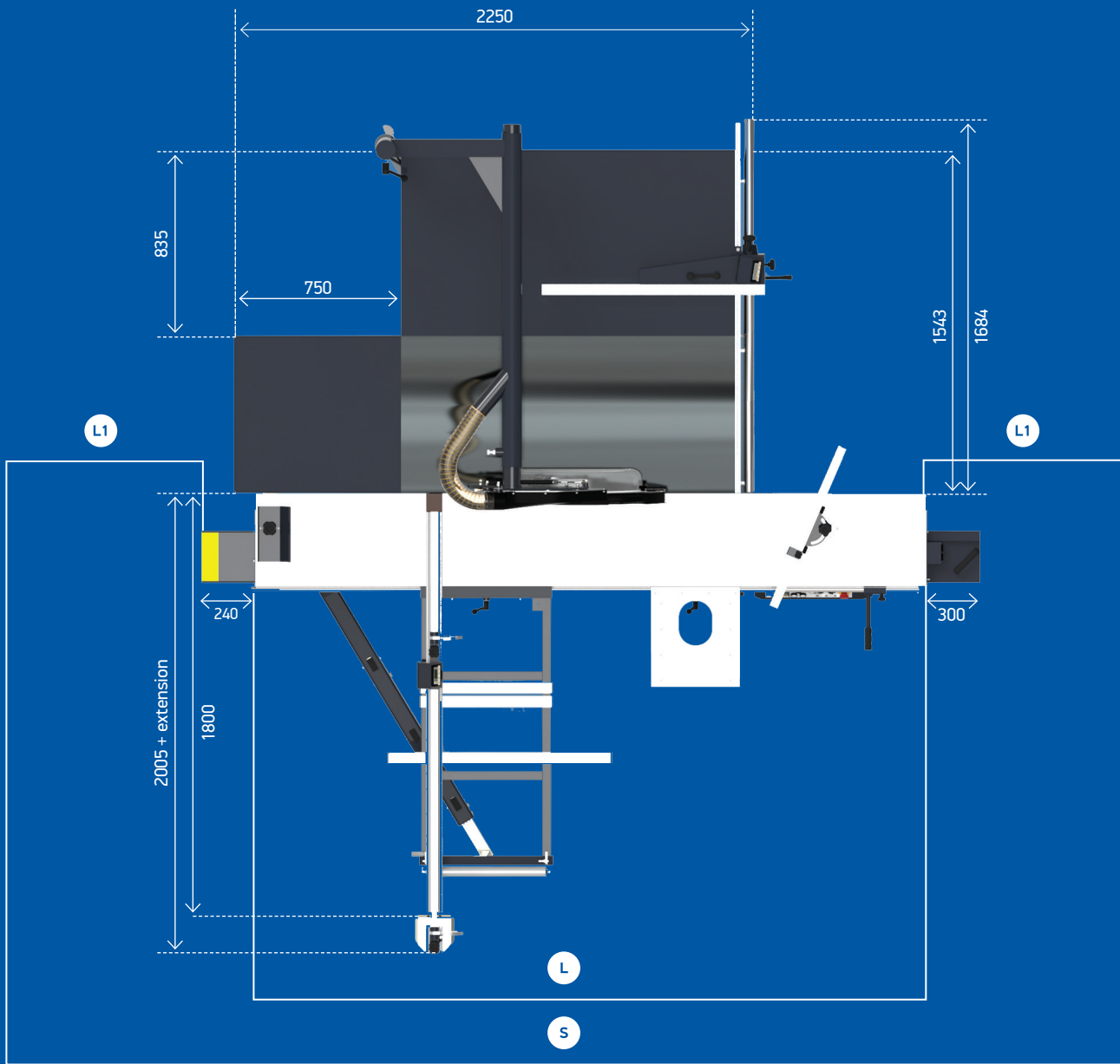
Wireless start / stop switch located on the sliding table (optional).



Independent drives of scoring unit and main saw blade.



Electronic reader of the crosscut fence stopper with absolute memory function and 0.1 mm accuracy (optional).



Fx450 sliding table options

Options	L	L1	S	Cutting length with crosscut fence
300	3010	1711	6428	3000
320	3200	1786	6772	3200
390	3900	2149	8198	3700

Fx450

Specifications ↓

Working dimensions

Sliding table diameters	sliding table 300 – 416 × 3010 mm [width×length] sliding table 320 – 416 × 3200 mm [width×length] sliding table 390 – 416 × 3900 mm [width×length]
Iron cast table diameters	705 × 1500 mm
Working height	890 mm

Machine diameters

Length	3500 mm with sliding table 300 3700 mm with sliding table 320 4400 mm with sliding table 390
Width	3690 mm + extension = 4990 mm
Maximal height	1950 mm
Extraction outlet diameter	Ø 80 mm
Extraction outlet diameter – bottom	Ø 125 mm
Air requested (bottom extraction system)	900 m³/h
Air requested (top extraction system)	360 m³/h
Suction air speed	28 m/s
Weight	1250 kg

Cutting parameters

Main saw blade diameter	Ø 300 – Ø 450 mm	
Sawing height depending on saw blade and angle	0°	45°
→ saw blade Ø 300	0–75 mm	0–50 mm
→ saw blade Ø 350	0–100 mm	0–70 mm
→ saw blade Ø 400	20–125 mm	12–85 mm
→ saw blade Ø 450	45–150 mm	30–105 mm
Saw blade tilting	0–45°, 0–46° (option)	

Cutting length with a crosscut fence

Sliding table 300	3000 mm
Sliding table 320	3200 mm
Sliding table 390	3700 mm

Cutting width with the crosscut fence

Stopper on the crosscut fence	50–1750 mm
Extension	1965–3200 mm
Stopper with electronic reader	50–1630 mm
Maximal distance of the rip fence	1400 mm

Drives parameters

Main motor power	6 kW / 7,5 kW – option
Scoring unit motor power	0,75 kW
Scoring unit saw diameter	Ø 120 – Ø 130 mm
Scoring unit rotation speed	8500 rpm
Main spindle tip diameter	Ø 30 mm
Scoring unit spindle diameter	Ø 20 mm
Main spindle rotation speeds	3500 / 4500 / 6000 rpm

* Machine specifications are subject to change. In case of doubt, the parameters indicated in the individual offer are binding.





Lignotech Ltd

Telephone:
0116 299 0062
Mobile: 07740 369139
www.lignotech.co.uk